



GOOD NEWS TRAVELS FAST

Bendix ELECTRIC FUEL PUMP

For superlative engine performance

Among sports car fans news about an outstanding piece of equipment gets around fast. That's why so many sports cars today are equipped with the Bendix* Electric Fuel Pump. It makes sense, because the Bendix Electric Fuel Pump was designed and built for people who demand perfection. If you are one of those enthusiasts who insist that a

car deliver every last ounce of power and performance that was engineered into it, then you want to know more about the Bendix Electric Fuel Pump. When you've tried it, you'll never operate a car without it—even if it does cost a little more. (Send for illustrated folder.)

*REG. U. S. PAT. OFF.

Bendix-Elmira

ECLIPSE MACHINE DIVISION • ELMIRA, NEW YORK



Sell 'n' Swap

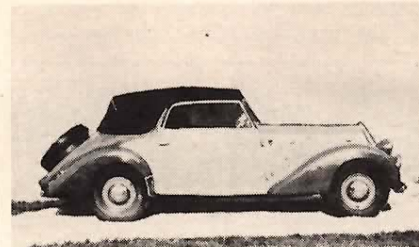
continued



'42 PACKARD conv. 127-in. wheelbase; '54 288-cu.-in. engine with 20,000 mi.; r & h. Exc. cond.; perf. running order, driven daily. \$750. John DuVal, 2715 Alabama, Fort Smith, Ark.
'48 LINCOLN CONTINENTAL V-12 htdp. R & h, o.d., power brakes & windows, ww's. Absolutely orig. & beautiful. \$1350 or highest offer. Larry Widmann, 2336 Chestnut St., Fort Wayne, Ind.

SELL OR SWAP

'48 LINCOLN CONTINENTAL htdp. Orig. & complete; in exc. cond. \$1200, or swap up or down for '31 Ford touring, Auburn or Cord Speedster—or what have you? R. E. Hecht, 1300 N. Scott St., Apt. 14, Arlington, Va.
'38 DAIMLER-STEYR 220 ohv 6 conv. Outstanding orig. cond.; good history. Drive anywhere. \$895;



trades considered. Pix 50c set. Earl D. Potter, 8811 W. 102nd St., Rt. 4, Oak Lawn, Ill.
'37 BUICK Special 4-dr. conv. sed. Passed latest Pennsylvania state inspection. Will trade on '53-'54 Cadillac 7-pass. with air conditioning. Must have \$800 trade allowance. James Creznic, 3800 Derry St., Harrisburg, Pa.

WANTED

OLD STEAM CAR or small steam engine. Must be reasonable. A. Landry, 12 Greenwood Rd., Yonkers, N.Y.
'28 CHEVROLET PARTS—touring bows, sockets & top rests. Also any new genuine '28 Chevy mechanical or body parts. Give full description, cond. & price. Donald H. Morris, 426 Patrick St., Mineral Wells, Tex.

'32 PLYMOUTH PB with good engine, or engine only. Must be in tiptop shape. Joe Olivares, 3965 E. California, Pasadena, Calif. Phone Gilbert 8-1364.

'28-'29 GRAHAM-PAIGE 8-cyl. or Big 6 cpe., with 4-speed transmission. State details, cond., price. C. W. Goodwin, 1357 Winter St., Augusta, Ga.

FOR '33 GRAHAM Custom '8: cylinder head, water pump, owner's and/or service manual, open body or cpe. body. All letters answered. Bill Snodgrass, 507 W. Denton St., Ennis, Tex.

CLASSIC CAR CATALOGS: Cadillac, Lincoln, Packard, Pierce-Arrow, Stutz, Duesenberg, Marmon, Cord, Auburn, Isotta, Rolls-Royce, Bugatti, others. Will top any offer on certain items needed to complete collection. Sheldon J. Lewis, 61-33 213th St., Bay-side, L. I., N. Y.

'49 CHRYSLER Town & Country 8-cyl. conv. Must be running, with good wood & body. No high prices. Prefer New England-Pennsylvania area. Donald Syren, R Div., U.S.S. Keppler, D.D.E. 765, c/o F.P.O. New York.

CLASSIC AUTOMOBILE CATALOGS. Antique & pre-war makes: Buick, Chrysler, Pierce-Arrow, Packard, Rolls-Royce, Ford, Lincoln, Cadillac. Buy all makes; will pay most dollars. Send your list. Lewis A. Mayer, Munith, Mich.

LITERATURE, repair manuals & old parts catalog for '28 Chevrolet. R. L. Brammell, 2001 W. 12th Ave., Emporia, Kan.

KELLISON Gran Tourisimo

The sleek lines of the new Kellison fiberglass sports car combine race-proven dependability with all-weather comfort. Exclusive integral stress design and advanced styling is available in coupe or roadster bodies to fit any chassis or as a complete car to your specifications. Send \$1.00 for color brochure, refundable with first order. Dealer inquiries invited.



Coupe or roadster bodies available for wheelbase sizes 85 to 106 inches. All bodies include firewall, floor pan, inner wheel wells, headlight receptacles, dash board, door jams, hinge boxes, drive shaft tunnels. Complete line of body accessories available.

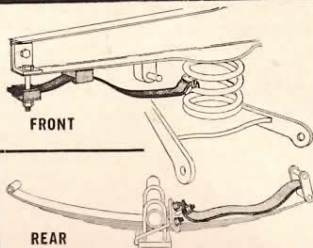
KELLISON ENGINEERING & MANUFACTURING CO.

905-M Sutter Street Folsom, California YUkon 5-4022

For Safer, Smoother Driving

HELLWIG ADJUSTABLE HELPERS

eliminate the rough ride from worn shocks and sagging springs—give new stability to all cars—increase carrying capacity. Easily installed. Passenger cars—pickups



Leading automotive editors agree that late model cars need rear spring support. HELLWIG ADJUSTABLE HELPERS (with the MOTOR TREND Seal of Approval) give you the surest support!



Distributors: Write for full information on this great profit line.

HELLWIG PRODUCTS CO., INC. 6231 San Fernando Rd., Glendale 1, Calif.